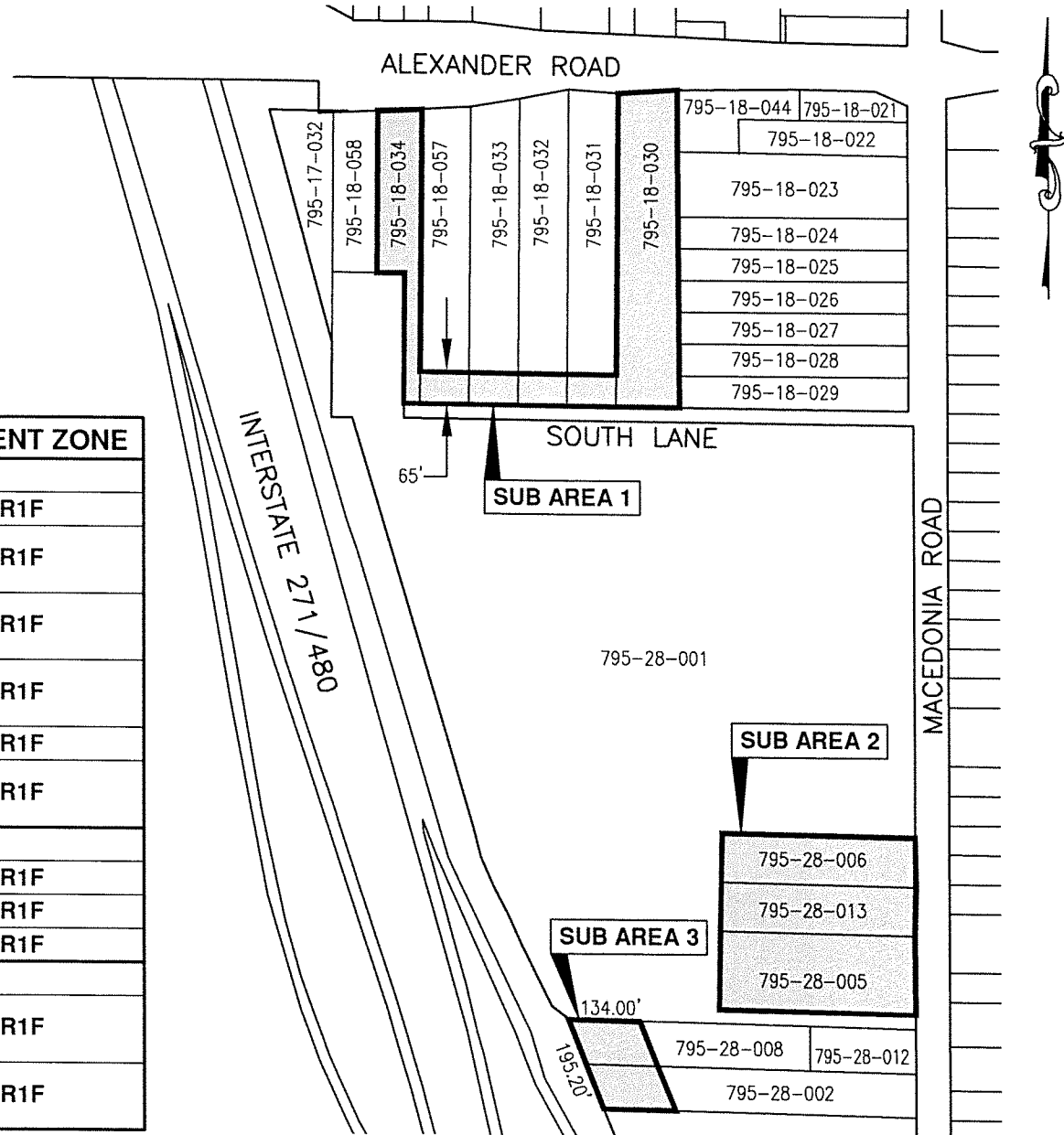


EXHIBIT A

PROPOSED SOUTHERLY LIGHT INDUSTRIAL DISTRICT



PARCEL NO.	PRESENT ZONE
SUB AREA 1	
795-18-030	R1F
795-18-031 South 65 Feet	R1F
795-18-032 South 65 Feet	R1F
795-18-033 South 65 Feet	R1F
795-18-034	R1F
795-18-057 South 65 Feet	R1F
SUB AREA 2	
795-28-005	R1F
795-28-006	R1F
795-28-013	R1F
SUB AREA 3	
795-28-002 West 134 Feet	R1F
795-28-008 West 134 Feet	R1F
